

FUME
EXTRACTION EQUIPMENT



XA4 SERIES EXTRACTOR ARM
FUME CAPTURE ARM

- Flexible 6.5', 10' or 13' long, 6" diameter externally articulated capture arm with a suction hood
- Rugged steel base and lightweight aluminum pantograph tube construction

Welding • Grinding



Up to 1800 CFM

FRED JR
PORTABLE FUME EXTRACTOR

- 1.5 HP
- 120v/1P/60Hz
- Nanofiber MERV 15 Cartridge Filter
- 10 ft. x 6" DIA Capture Arm

Welding • Deburring • Grinding • Soldering



Up to 800 CFM

FRED ECO II
WALL MOUNTED FUME EXTRACTOR

- 1.5 HP
- 120v/1P/60Hz
- Nanofiber MERV 15 Cartridge Filter
- 10 ft. x 6" DIA Capture Arm

Welding



Up to 1500 CFM

DD 2X4 - SELF-CLEANING
PORTABLE DOWNDRAFT TABLE

- 1.5 HP
- 120v/1P/60Hz
- Nanofiber MERV 15 Cartridge Filter
- Welding/Grinding/Deburring Kit

Welding • Deburring • Grinding



DD 2X4 is a portable, reliable, and easy-to-use downdraft table for industrial duty applications

ABOUT DIVERSITECH



Diversitech is a manufacturer of industrial-grade air pollution control equipment. Since 1984, we've engineered rugged **dust collectors, fume extractors and purification systems** built with powder-coated steel for years of reliable service on any shop floor or training facility. With thousands of installations and a reputation for quality, innovation and engineering flexibility. Diversitech delivers smart, accessible solutions that protect your processes and your people.

BUILT FOR SAFETY - EDUCATION

HEALTH & SAFETY

Learning to weld means learning to protect yourself. Welding produces smoke and fumes that can be harmful if not properly controlled. Without the right safety measures, these airborne hazards can cause **long-term health problems**, impacting both students and instructors in the training environment.

That's why it's just as important to teach safety as it is to teach welding skills. By practicing with **proper ventilation, fume extraction, and personal protective equipment**, students gain the confidence to work safely and responsibly.

COMPLIANCE

Safety isn't optional, it's a standard. Regulations from **OSHA, NFPA**, and international agencies are becoming increasingly rigorous. Schools are expected to provide safer, healthier training environments than ever before.

Diversitech equipment is engineered to **exceed** OSHA and NFPA requirements while remaining fully **ADA compliant**. This ensures safe, accessible, and regulation-ready environments, which provides schools and instructors the confidence that their students are learning in facilities that meet the highest standards of safety, health, and accessibility.



**WELDING BOOTHS &
MOBILE WELDING TRAILER**

**WELDING BOOTHS &
MOBILE WELDING TRAILER**



- WB - 1000 SERIES
WALK-IN WELDING BOOTHS**
 - Custom sizes available
 - Powder Coated Steel Construction
 - Anti-flash UV curtain
 - Optional fume arms

Lightweight, economical entry-level booth



Welding booths engineered for long-lasting performance in commercial and educational environments



- MOBILE WELD TRAILER**
 - Custom mobile welding certification trailers from 30' to 52'
 - Individual welding stations with fume extractors
 - Shielding gas hookups and connections
 - Optional generator power

Welding • Grinding • Cutting



Versatile, mobile welding trailer custom-built to suit your welding needs



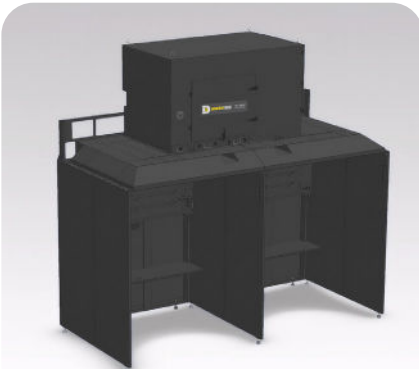
- WB - 3500 SERIES
SINGLE OR DUAL CONFIGURATION**
 - Self-contained, ductless design
 - Backdraft & updraft airflow with dampers
 - Double panel wall with top mounted collector
 - Optional dust-proof lighting, outlets & more

Self-contained ductless design



- WB - 5000 SERIES
SINGLE OR DUAL CONFIGURATION**
 - Backdraft & updraft airflow with dampers
 - Compatible with top-mount or external collectors
 - Optional dust-proof lighting, outlets & more

Flexible with external collector options



- WB - 6000 SERIES
SINGLE OR DUAL CONFIGURATION**
 - Built in gas or compressed air lines
 - Backdraft & updraft airflow with swing-open cleanout panel
 - Compatible with top-mount, or external collectors
 - Optional dust-proof lighting, outlets & more

Premium with built-in utilities



Fully equipped mobile welding trailers

