



INDUSTRIAL DOWNDRAFT TABLES

3X4, 3X6, 3X8, 4X4, 4X6, 4X8, 5X10



Diversitech's DD series of industrial downdraft tables are the trusted choice of North America's largest manufacturers, and are built to withstand the most demanding applications. Any fumes, smoke or dust from your production activities can be captured right as they are produced, before compromising your indoor air quality. Your choice of standard table sizes range from 3'x4' to 5'x10', and larger worksurfaces can be easily created by "mirroring" multiple tables.

All downdraft tables come fitted with multi-stage spark arrestance baffles, dual 10" diameter exhaust silencers and an automatic reverse-pulse filter cleaning system to help reduce maintenance requirements. Many options and accessories are available for the DD series of downdraft tables, and tables can be custom configured and built-to-order in almost any configuration.

Flexible, all-in-one, downdraft solution for dust, smoke, or fumes produced from welding, grinding, deburring, cutting, sanding, finishing, soldering, painting, or mixing.

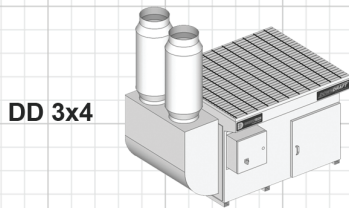
Features:

- High capture face velocity (250fpm)
- Multi-stage spark arrestance baffling
- Industrial swivel-casters
- Reverse pulse cleaning system

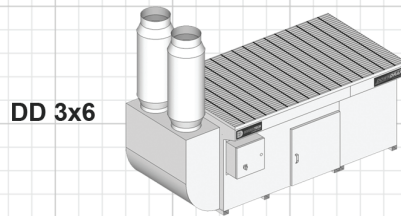
Benefits:

- Hands-free capture-at-source
- Low maintenance, automatic self-cleaning system included
- Complies with OSHA guidelines for safe capture of dust, smoke, and weld fumes

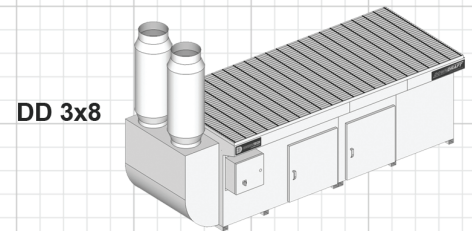
The Industrial Downdraft Family



DD 3x4



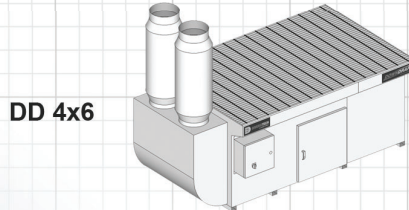
DD 3x6



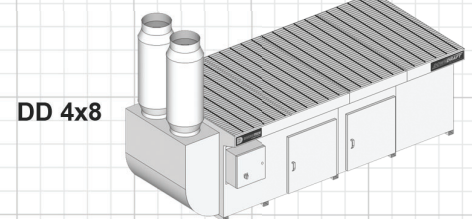
DD 3x8



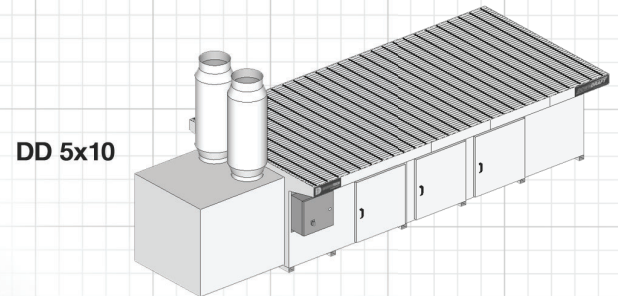
DD 4x4



DD 4x6



DD 4x8



DD 5x10

Welding, Grinding & Deburring Kit:

- Side and back walls
- Metal mesh pre-filter
- Grounding lug



Plasma Cutting Kit:

- 2" high steel bar grating
- Slag collection baffle with 3/4" gravel
- Metal mesh pre-filter



VOC & Paint Kit:

- Side and back walls
- Paint arrestor pre-filter
- Reversible carbon canister afterfilter



Clean Air Workstation:

- Side and back walls (48" high w/top cover)
- Dust & vapor proof light kit
- Backdraft hood



Primary Filters

NANOTECH XV

MERV 15 efficient cartridge filter captures particles at the submicron level, and surface-loading technology allows dust to be easily dislodged during cleaning with compressed air.

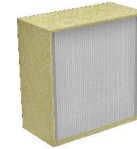


EFFICIENCY: MERV 15
FILTER MEDIA: NANOFIBER
MEDIA AREA: 139 SQ.FT.
COATING: FIRE RETARDANT
END CAP: OPEN/CLOSED
CLEANING METHOD: COMPRESSED AIR
MAX TEMP: 180° F / 82° C
FLANGE: YES

After Filters

HEPA

The HEPA cartridge filter captures particles at the submicron level, it provides the highest level of filtration efficiency 99.97% at 0.3 micron.



EFFICIENCY: 99.97% AT 0.3 MICRON
FILTER MEDIA: HEPA
MEDIA AREA: 24" x 24" x 11½"
COATING: NONE
END CAP: N/A
CLEANING METHOD: DISPOSABLE
MAX TEMP: 175° F / 82° C
FLANGE: NONE

POLYTECH XI

High strength, high efficiency (MERV 11) cartridge filter made from 100% spun-bond polyester that lowers costs, by allowing for water-based cleaning of captured contaminants.



EFFICIENCY: MERV 11
FILTER MEDIA: SPUNBOND POLY
MEDIA AREA: 55 SQ.FT.
COATING: WATER REPELLENT
END CAP: OPEN/CLOSED
CLEANING METHOD: AIR + WATER WASH
MAX TEMP: 180° F / 82° C
FLANGE: YES

CARBOTECH 50

Reversible steel canister filled with 44 lbs of activated carbon to filter VOC fumes and odors. Double the filter life by flipping the canister top-to-bottom, allowing for adequate contaminant distribution through the media.

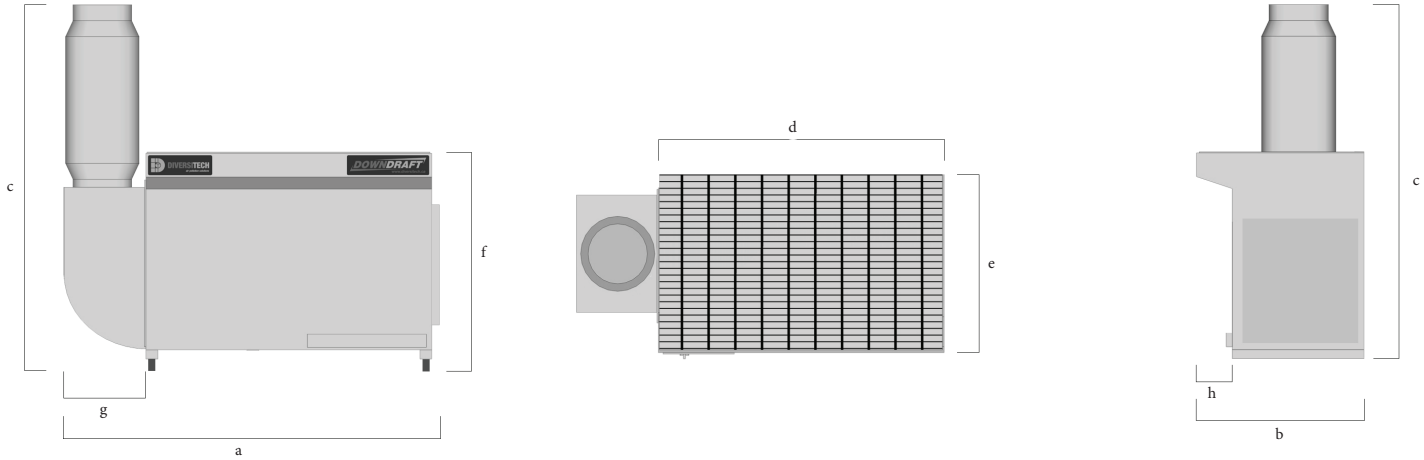


WEIGHT: 44 LBS
FILTER MEDIA: CARBON
MEDIA THICKNESS: 2.6"
COVER: 3/4" ANTIBACTERIAL
END CAP: TWIST LOCK REMOVABLE
CLEANING METHOD: NONE
MAX TEMP: 175° F / 80° C
FLANGE: NONE

IMPORTANT : If your equipment was purchased after November 15, 2018, a Replacement Filter Card, featuring filter details and simple instructions to easily order replacement filters, will be located on the filter door.

Specifications

| Model | Motor | Power | | | | Nominal | Static | Face | Noise |
|---|-------|---------|--------------------------|--------------------------|--------------------------|---------|--------|-------|-------|
| | | Phase | @230V F.L.A (amps) | @460V F.L.A (amps) | @575V F.L.A (amps) | | | | |
| | (H.P) | (hz) | | | | (CFM) | (in.) | (FPM) | (dB) |
| Industrial Downdraft Tables, three phase | | | | | | | | | |
| DD-3X4 | 5.0 | 3P/60Hz | 15.2 | 7.6 | 6.1 | 4300 | 4.0 | 450 | 79 |
| DD-3X6 | 5.0 | 3P/60Hz | 15.2 | 7.6 | 6.1 | 4300 | 4.0 | 325 | 79 |
| | 7.5 | 3P/60Hz | 22.0 | 11.0 | 9.0 | 5050 | 4.0 | 375 | 81 |
| DD-3X8 | 7.5 | 3P/60Hz | 22.0 | 11.0 | 9.0 | 5050 | 4.0 | 330 | 81 |
| | 10.0 | 3P/60Hz | 28.0 | 14.0 | 11.0 | 6300 | 4.0 | 338 | 83 |
| Industrial Multi-operator Downdraft Tables, three phase | | | | | | | | | |
| DD-4X4 | 5.0 | 3P/60Hz | 15.2 | 7.6 | 6.1 | 4300 | 4.0 | 425 | 79 |
| DD-4X6 | 7.5 | 3P/60Hz | 22.0 | 11.0 | 9.0 | 5050 | 4.0 | 325 | 81 |
| | 10.0 | 3P/60Hz | 28.0 | 14.0 | 11.0 | 6300 | 4.0 | 375 | 83 |
| DD-4X8 | 10.0 | 3P/60Hz | 28.0 | 14.0 | 11.0 | 6300 | 4.0 | 300 | 83 |
| DD-5X10 | 15.0 | 3P/60Hz | 42.0 | 21.0 | 17.0 | 8600 | 4.0 | 330 | 85 |



Dimensions **

| Model | Exhaust Diameter (in.) | Footprint (in.) | | | Worksurface (in.) | | Table Height [f/S&B/CAW] | Exhaust [g] | Overhang [h] (in.) |
|---------------------------------|------------------------------|--------------------|--------------|---------------|----------------------|--------------|------------------------------------|--------------------|------------------------------|
| | | Length [b] | Width [a] | Height [C] | Length [e] | Width [d] | | | |
| Downdraft Tables, Standard Size | | | | | | | | | |
| DD-3X4 | 10 x 2 | 43 | 62 | 68.5 | 42 | 48 | 36/69/84 | 14 | 6 |
| DD-3X6 | 10 x 2 | 43 | 87 | 68.5 | 42 | 72 | 36/69/84 | 14 | 6 |
| DD-3X8 | 10 x 2 | 43 | 111 | 68.5 | 42 | 96 | 36/69/84 | 14 | 6 |
| DD-4X4 | 10 x 2 | 49 | 63 | 68.5 | 48 | 48 | 36/69/84 | 14 | 6 x 2 |
| DD-4X6 | 10 x 2 | 49 | 87 | 68.5 | 48 | 72 | 36/69/84 | 14 | 6 x 2 |
| DD-4X8 | 10 x 2 | 49 | 111 | 68.5 | 48 | 96 | 36/69/84 | 14 | 6 x 2 |
| DD-5X10 | 10 x 2 | 61 | 155 | 68.5 | 60 | 120 | 36/69/84 | 34 | 12 x 2 |

** Product dimensions are based on base-models and may vary depending on selected product features. Please contact us for an accurate shipping quote.

HEAD OFFICE

3200 rue Guénette
 Saint-Laurent, QC, Canada
 H4S 2G5


DIVERSITECH

Part of Absolent
 Air Care Group

1-800-361-3733

info@diversitech.ca
 www.diversitech-air.com
 www.diversitech.ca



1-800-361-3733



info@diversitech.ca